

Consumo de Paquetes de Cigarrillos

Serie Histórica 1910-2026

Coordinación de Tabaco
Área de Finanzas y Acopio



**Ministerio
de Economía**
República Argentina

**Secretaría de Agricultura,
Ganadería y Pesca**



PAQUETES DE CIGARRILLOS CONSUMIDOS			
AÑO	TOTAL PAQUETES	POBLACION	CONSUMO APARENTE (paq/hab/año)
1910	218.128.034	7.091.294	31
1911	237.449.275	7.294.386	33
1912	264.898.666	7.497.478	35
1913	281.628.848	7.700.570	37
1914	268.504.891	7.903.662	34 (*)
1915	261.441.039	8.161.409	32
1916	214.895.469	8.419.155	26
1917	222.903.154	8.676.902	26
1918	251.203.453	8.934.649	28
1919	270.034.900	9.192.396	29
1920	293.844.034	9.450.142	31
1921	316.837.221	9.707.889	33
1922	328.222.043	9.965.636	33
1923	331.774.882	10.223.383	32
1924	346.603.951	10.481.129	33
1925	366.328.403	10.738.876	34
1926	381.396.634	10.996.623	35
1927	380.368.075	11.254.370	34
1928	400.647.847	11.512.116	35
1929	418.118.716	11.769.863	36
1930	410.760.938	12.027.610	34
1931	414.238.325	12.019.799	34
1932	417.715.711	12.261.925	34
1933	421.193.098	12.504.051	34
1934	424.670.485	12.277.546	35
1935	482.184.856	12.535.292	38
1936	422.917.269	12.793.039	33
1937	445.466.691	13.472.554	33
1938	468.016.113	13.730.301	34
1939	498.280.794	13.988.047	36
1940	521.106.264	14.245.794	37
1941	519.138.536	14.503.541	36
1942	549.556.569	14.761.288	37
1943	550.555.130	15.019.034	37
1944	596.425.562	15.276.781	39
1945	644.648.635	15.534.528	41
1946	696.048.150	15.792.275	44
1947	762.451.460	15.893.811	48 (*)
1948	819.459.737	16.210.733	51
1949	889.854.678	16.527.654	54
1950	875.990.453	16.844.576	52
1951	889.581.879	17.161.498	52
1952	968.003.074	17.478.419	55
1953	992.010.771	17.795.341	56
1954	974.916.605	18.112.263	54
1955	1.047.090.342	18.429.185	57
1956	1.068.342.397	18.746.106	57
1957	1.096.676.663	19.063.028	58
1958	1.118.434.577	19.379.950	58
1959	1.166.610.429	19.696.871	59
1960	1.107.000.000	20.013.793	55 (*)
1961	1.158.000.000	20.348.857	57
1962	1.229.000.000	20.683.920	59
1963	1.199.000.000	21.018.984	57
1964	1.257.000.000	21.354.047	59



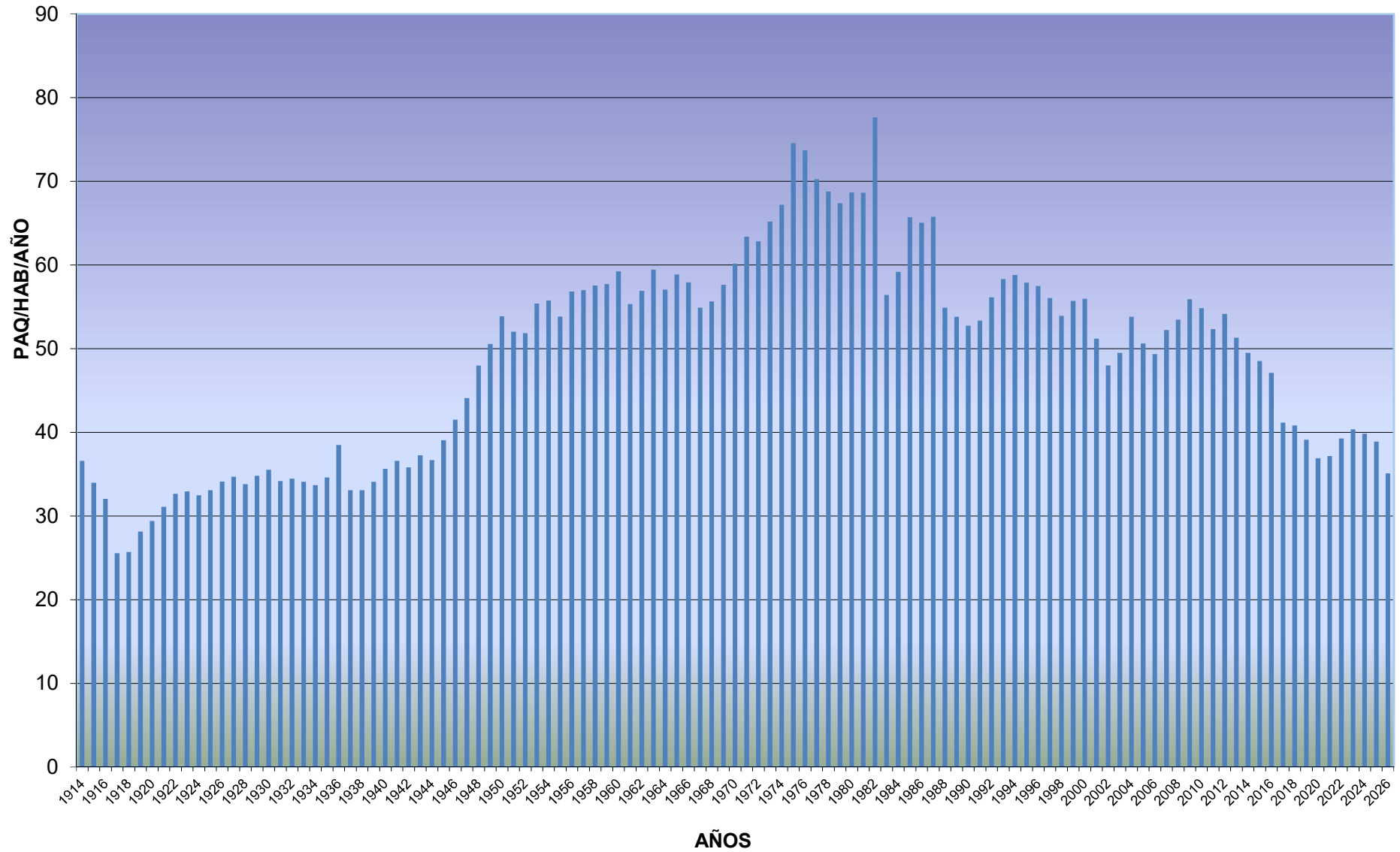
PAQUETES DE CIGARRILLOS CONSUMIDOS			
AÑO	TOTAL PAQUETES	POBLACION	CONSUMO APARENTE (paq/hab/año)
1965	1.256.000.000	21.689.111	58
1966	1.209.000.000	22.024.174	55
1967	1.244.041.931	22.359.238	56
1968	1.307.500.500	22.694.301	58
1969	1.385.036.194	23.029.365	60
1970	1.480.795.211	23.364.431	63 (*)
1971	1.497.168.091	23.831.720	63
1972	1.584.330.130	24.308.354	65
1973	1.666.275.247	24.794.521	67
1974	1.885.414.709	25.290.412	75
1975	1.901.137.764	25.796.220	74
1976	1.848.095.924	26.312.144	70
1977	1.845.378.563	26.838.387	69
1978	1.844.179.087	27.375.155	67
1979	1.917.364.711	27.922.658	69
1980	1.918.197.307	27.949.480	69 (*)
1981	2.202.815.660	28.373.666	78
1982	1.624.369.829	28.797.852	56
1983	1.728.808.308	29.222.039	59
1984	1.947.833.946	29.646.225	66
1985	1.955.251.516	30.070.411	65
1986	2.005.392.099	30.494.597	66
1987	1.696.710.449	30.918.783	55
1988	1.686.095.609	31.342.969	54
1989	1.674.672.639	31.767.156	53
1990	1.739.183.311	32.615.528	53 (*)
1991	1.848.632.480	32.941.683	56
1992	1.939.489.604	33.271.100	58
1993	1.976.068.222	33.603.811	59
1994	1.964.478.119	33.939.849	58
1995	1.969.877.224	34.279.248	57
1996	1.940.054.839	34.622.040	56
1997	1.884.684.323	34.968.261	54
1998	1.967.278.730	35.317.943	56
1999	1.995.519.695	35.671.123	56
2000	1.843.491.732	36.027.834	51
2001	1.739.783.213	36.260.130	48 (*)
2002	1.811.771.656	36.622.731	49
2003	1.989.645.554	36.988.959	54
2004	1.890.233.490	37.358.848	51
2005	1.861.704.213	37.732.437	49
2006	1.989.818.229	38.106.026	52
2007	2.057.136.240	38.487.086	53
2008	2.172.683.269	38.868.147	56
2009	2.131.679.613	38.871.957	55
2010	2.098.313.793	40.091.359	52 (**)
2011	2.191.814.705	40.492.273	54
2012	2.140.351.208	41.733.271	51
2013	2.088.808.152	42.202.935	49
2014	2.069.326.849	42.669.500	48
2015	2.031.094.744	43.131.966	47
2016	1.794.084.061	43.590.368	41
2017	1.797.332.979	44.044.811	41
2018	1.739.680.300	44.494.502	39
2019	1.657.683.963	44.938.712	37



PAQUETES DE CIGARRILLOS CONSUMIDOS			
AÑO	TOTAL PAQUETES	POBLACION	CONSUMO APARENTE (paq/hab/año)
2020	1.685.845.270	45.376.763	37
2021	1.798.517.658	45.808.747	39
2022	1.857.593.932	46.044.703	40 (**)
2023	1.857.593.932	46.654.581	40
2024	1.829.794.726	47.067.641	39
2025	1.665.687.119	47.473.760	35
2026	1.665.687.119	46.387.098	36

(*) Para el cálculo de la serie de población se tomaron en cuenta los datos censales provistos por el INDEC para la estimación de los datos en los períodos intercensales se calculó la variación porcentual entre ellos y se estableció una tasa de crecimiento constante. El mismo procedimiento se realizó para los años 1930 a 1932 donde no había datos disponibles.
(**) Dato de población: Censo 2010- 2022 INDEC

CONSUMO APARENTE DE CIGARRILLOS



CONSUMO APARENTE DE CIGARRILLOS

